

Disconnect terminal, Screw connection, Mounting type: Mounting rail TS 15/5.5, Rated cross-section: 4 mm², Width: 8 mm, Colour: Beige

Business data

| | |
|--|---------------------|
| Packaging unit | 100 |
| Quantity unit | PC |
| Weight per piece (not including packaging) | 11.41 g |
| Weight per piece (including packaging) | 12.26 g |
| Unit of weight | G |
| Customs number | 85369010 |
| Country of origin | DE |
| Prio-Article | 1382.5 |
| Product description | Disconnect terminal |

Technical data

Dimensions

| | |
|------------------|-------|
| Length | 49 mm |
| Width | 8 mm |
| Height TS 15/5.5 | 34 mm |

Ratings

| | |
|---|-------------------|
| Rated voltage | 500 V |
| Rated current | 6.3 A |
| Rated cross-section | 4 mm ² |
| Rated impulse voltage | 6 kV |
| Overvoltage category | III |
| Contamination degree | 3 |
| Maximum power dissipation for nominal condition | 0.2 W |

Technical data

Connection data

| | |
|--|---------------------|
| Connection principle | Screw connection |
| Connection position | Lateral |
| Connections | 2 |
| Number of terminals per level | 2 |
| Number of levels | 1 |
| Wire cross-section single-core (rigid) / stranded, min. | 0.2 mm ² |
| Wire cross-section single core (rigid)/stranded, max. | 4 mm ² |
| Wire cross-section stranded, min. | 0.2 mm ² |
| Wire cross-section stranded, max. | 4 mm ² |
| Wire cross-section stranded with wire-end ferrules, min. | 0.2 mm ² |
| Wire cross-section stranded with wire-end ferrules, max. | 2.5 mm ² |
| Wire cross-section AWG, min. | 22 |
| Wire cross-section AWG, max. | 12 |
| Stripping length | 9 mm |
| Screw head | Slotted |
| Screw threading | M 3 |
| Tightening torque, min. | 0.5 Nm |
| Tightening torque, max. | 1 Nm |

Materials

| | |
|---------------------------|---------------|
| Insulation housing | Polyamide 6.6 |
| Flammability class UL 94 | V-2 |
| Working temperature, min. | -40 °C |
| Working temperature, max. | 105 °C |

Further technical data

| | |
|---------------------------------|------------|
| Mounting type | TS 15 |
| Gauge plug acc. to EN 60 947-1 | A4 |
| End plate required | ✓ |
| Version of lengthwise partition | Swivelling |

1382.2

STK 2/15/K BG

Technical data

Print

| | |
|--------|-------|
| Colour | Beige |
|--------|-------|

Environmental Product Compliance

| | |
|---------------|----|
| REACH Conform | No |
|---------------|----|

| | |
|----------------------|------------|
| REACH Reference date | 2021-07-08 |
|----------------------|------------|

| | |
|--------------------------------|----|
| REACH Candidate Substance Note | No |
|--------------------------------|----|

| | |
|-----------------------|------|
| REACH CAS 1 Substance | LEAD |
|-----------------------|------|

| | |
|-----------------------------|-------|
| REACH CAS 1 Percent minimal | 0.1 % |
|-----------------------------|-------|

| | |
|-----------------------------|-----|
| REACH CAS 1 Percent maximum | 4 % |
|-----------------------------|-----|

| | |
|--------------------|-----------|
| REACH CAS 1 Number | 7439-92-1 |
|--------------------|-----------|

| | |
|--------------|-----|
| RoHS Conform | yes |
|--------------|-----|

| | |
|---------------------|----|
| RoHS Exception rule | 6c |
|---------------------|----|

Approvals

CSA approval

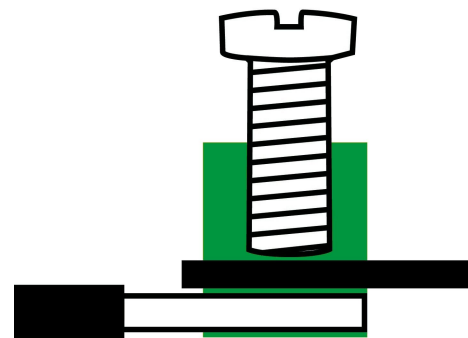
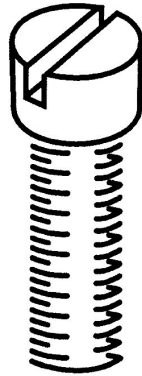
| | |
|----------------------------------|--------------|
| CSA approval | C22.2 No 158 |
| CSA approval granted | yes |
| CSA Usegroup C: rated voltage | 500 V |
| CSA Usegroup C: rated current | 6,3 A |
| CSA wire cross-section AWG, min. | 22 |
| CSA wire cross-section AWG, max. | 12 |
| CSA stripping length | 9 mm |

CSAus approval

| | |
|------------------------------------|---------|
| CSAus approval | UL 1059 |
| CSAus approval granted | yes |
| CSAus Usegroup C: rated voltage | 500 V |
| CSAus Usegroup C: rated current | 6,3 A |
| CSAus wire cross-section AWG, min. | 22 |
| CSAus wire cross-section AWG, max. | 12 |
| CSAus stripping length | 9 mm |

Media

M3

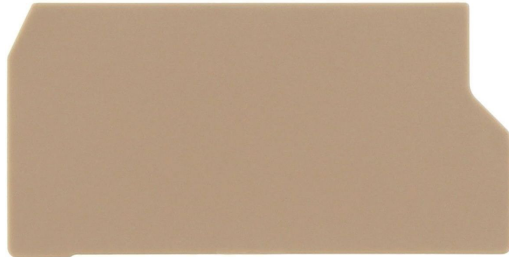


1382.2

STK 2/15/K BG

Accessories

End plate



End plate, Width: 1.5 mm, Colour: Beige

General order data

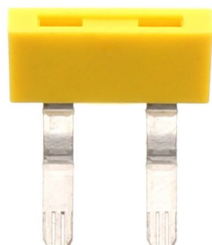
| Product number: | Article name | GTIN (EAN) | Packaging unit |
|-----------------|--------------|---------------|----------------|
| 2186.2 | AP/SI-2 BG | 4044211050061 | 500 ST |

1382.2

STK 2/15/K BG

Accessories

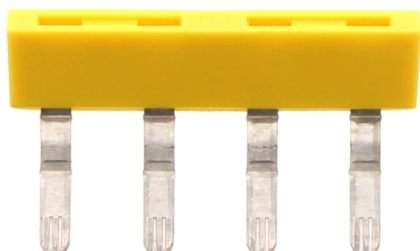
Insulated external cross-connector



External insulated cross-connector, No. of poles: 2, Mounting type: Plug in, Width: 16.1 mm, Rated current: 27 A; Colour: Yellow

General order data

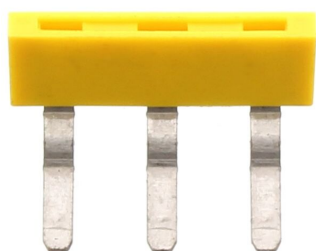
| Product number: | Article name | GTIN (EAN) | Packaging unit |
|-----------------|---------------|---------------|----------------|
| 2067.0 | AQI 2/8/11 YE | 4044211048730 | 500 ST |



External insulated cross-connector, No. of poles: 4, Mounting type: Plug in, Width: 32.3 mm, Rated current: 27 A; Colour: Yellow

General order data

| Product number: | Article name | GTIN (EAN) | Packaging unit |
|-----------------|---------------|---------------|----------------|
| 2069.0 | AQI 4/8/11 YE | 4044211048754 | 500 ST |



External insulated cross-connector, No. of poles: 3, Mounting type: Plug in, Width: 24.2 mm, Rated current: 27 A; Colour: Yellow

General order data

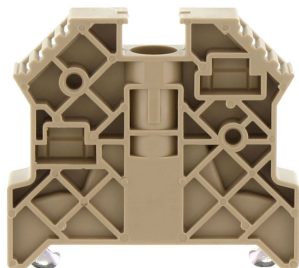
| Product number: | Article name | Creation date 15.11.2021 00:43:23 Subject to technical changes | GTIN (EAN) | Packaging unit |
|-----------------|---------------|---|---------------|----------------|
| 2068.0 | AQI 3/8/11 YE | | 4044211048747 | 500 ST |

1382.2

STK 2/15/K BG

Accessories

End stop



End stop, Mounting type: Mounting rail TS 35/7.5, Width: 9.5 mm, Colour: Beige

General order data

| Product number: | Article name | GTIN (EAN) | Packaging unit |
|-----------------|---------------|---------------|----------------|
| 2828.0 | ES 35/K/ST BG | 4044211055547 | 500 ST |

Solid link



Solid link, Colour: natural

General order data

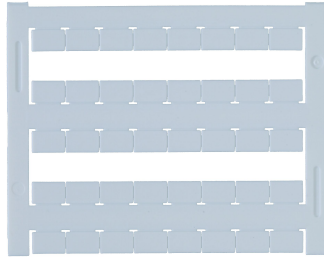
| Product number: | Article name | GTIN (EAN) | Packaging unit |
|-----------------|--------------|---------------|----------------|
| 2470.0 | KH 5 | 4044211052607 | 500 ST |

1382.2

STK 2/15/K BG

Accessories

Quick marking



Terminal marker / Pocket Maxicard, Length: 5 mm, Width: 8 mm, Colour: White

General order data

| Product number: | Article name | GTIN (EAN) | Packaging unit |
|-----------------|----------------|---------------|----------------|
| 9323.7 | PMC SB 8/40 WH | 4044211129231 | 500 ST |

Screwdriver



Screwdriver with bare blade, Colour: Black-grey

General order data

| Product number: | Article name | GTIN (EAN) | Packaging unit |
|-----------------|--------------|---------------|----------------|
| 1086.0 | SDB 0,6x3,5 | 4044211014797 | 500 ST |
